

*Bridle  
Creek*

# The Grace



## KEY RESIDENCE FEATURES:



**1,844 Square Feet of  
Single-Level Living**



**3 Bedrooms / 2 Baths**



**Spacious 2-Car Garage**

## DESCRIPTION

Experience the perfect balance of style and function in our most popular design. From the massive 7-foot kitchen island made for entertaining to the dual covered porches built for relaxation, every detail is crafted with you in mind. With a spacious oversized garage, private split-bedroom layout, and customizable bath options, **The Grace** proves you really can have it all on one level.

**Seven Foot Kitchen Island**

**PANHANDLE  
HOMES**

OF BERKELEY COUNTY



CONTACT OUR SALES OFFICE:  
**304-274-2400**

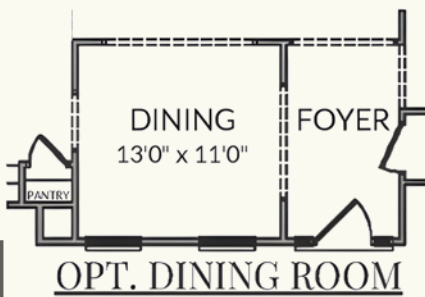
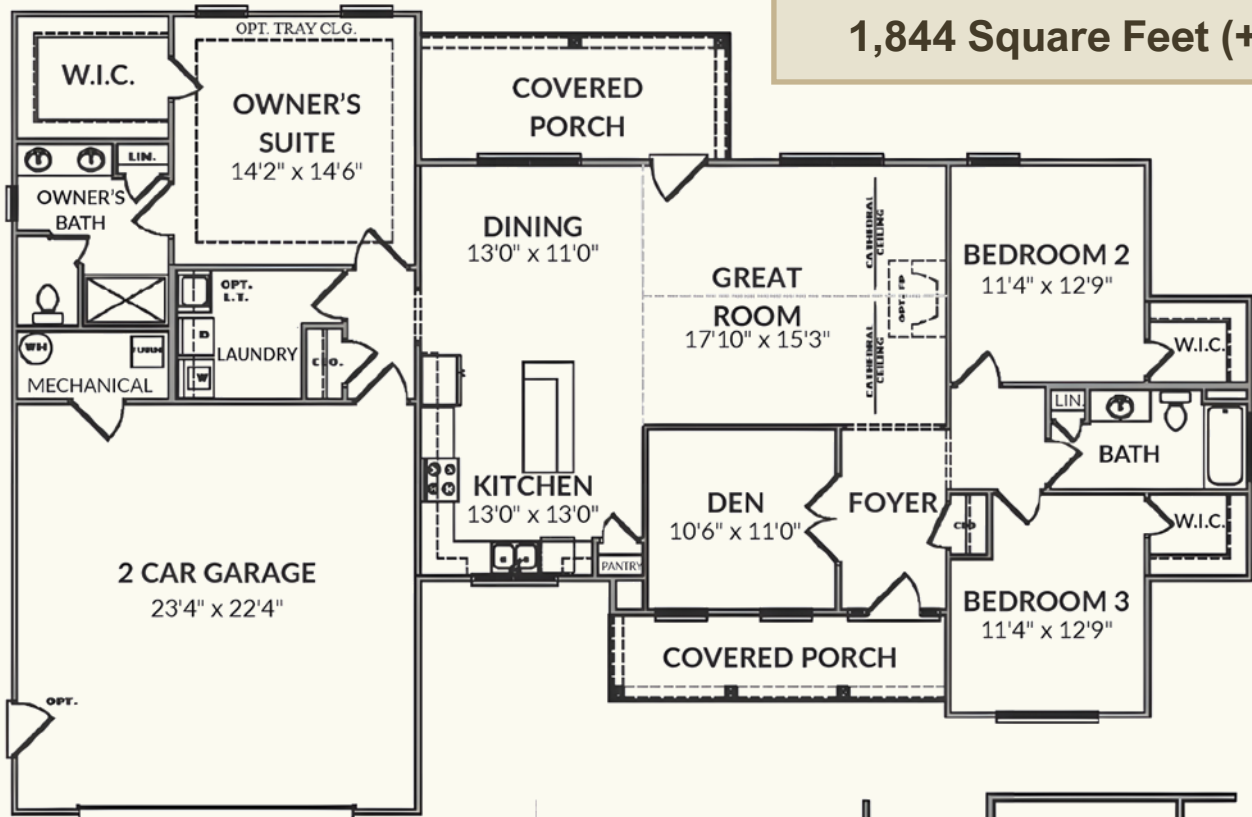
[info@panhandlehomeswv.com](mailto:info@panhandlehomeswv.com)  
[www.panhandlehomeswv.com](http://www.panhandlehomeswv.com)



# The Grace



1,844 Square Feet (+/-)



Room sizes are approximate. Picture on front may depict options not included in base price. In a continuing effort to improve our homes, the builder reserves the right to make changes in plans, features, specifications and / or materials without notice or obligation.

**ALSO AVAILABLE:**

**UNFINISHED BASEMENTS & FINISHED BASEMENT SPACE.  
SEE SALES REPRESENTATIVE FOR MORE INFORMATION.**

## PANHANDLE HOMES

OF BERKELEY COUNTY



Updated April 2026

