

*Bridle  
Creek*

# The Jayson



**1,674 Square Feet**  
**3 Bedrooms / 2 Baths**  
**2 Car Garage**

Our newest floorplan! Combines easy, ranch style living with style in our standard features. This house includes a laundry and mudroom combination, open concept kitchen, living, and dining areas, two car garage and covered front and rear porches! Love coming home to the Jayson.

Contact Our Sales Office:  
(304) 274-2400  
[Info@panhandlehomeswv.com](mailto:Info@panhandlehomeswv.com)

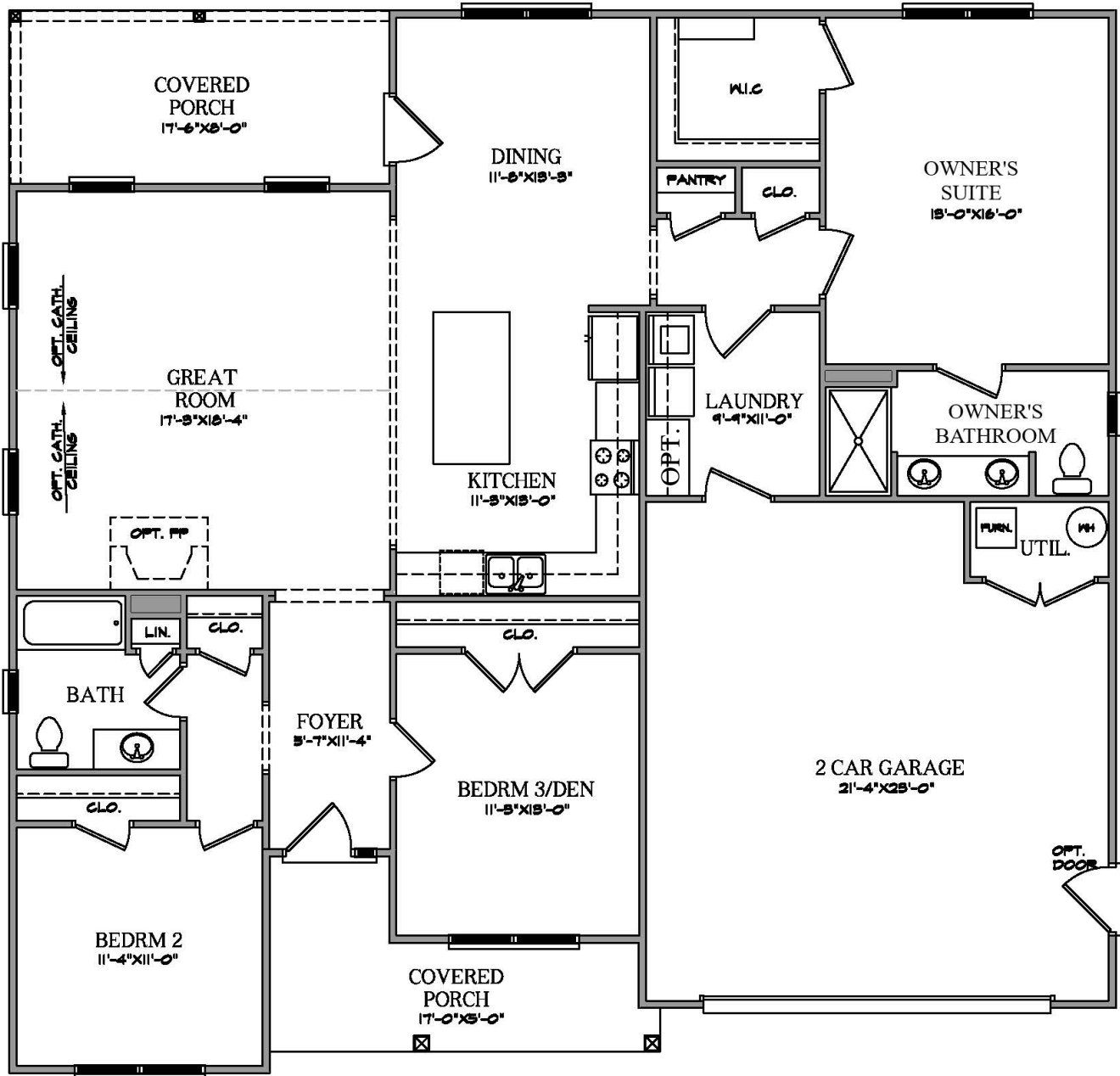
**PANHANDLE  
HOMES**  
**OF BERKELEY COUNTY**  
[www.panhandlehomeswv.com](http://www.panhandlehomeswv.com)



# The Jayson

Bridle  
Creek

ALSO AVAILABLE: UNFINISHED BASEMENTS  
& FINISHED BASEMENT SPACE. SEE SALES  
REPRESENTATIVE FOR MORE  
INFORMATION.



**1,674 Square Feet (+ / -)**

Room sizes are approximate. Picture on front may depict options not included in base price. In a continuing effort to improve our homes, the Builder reserves the right to make changes in plans, features, prices, specifications and / or materials without notice or obligation.

