



The Carson



Starting From 1,533 Square Feet
3 Bedrooms / 2 Baths
2 Car Garage

The Carson may be the ultimate in single level living. Perfectly sized, with only the space you need, including open great room with island kitchen, separated bedrooms, laundry-storage room, and curb appeal, plus! Choose from three exterior elevations. Relax, enjoy.

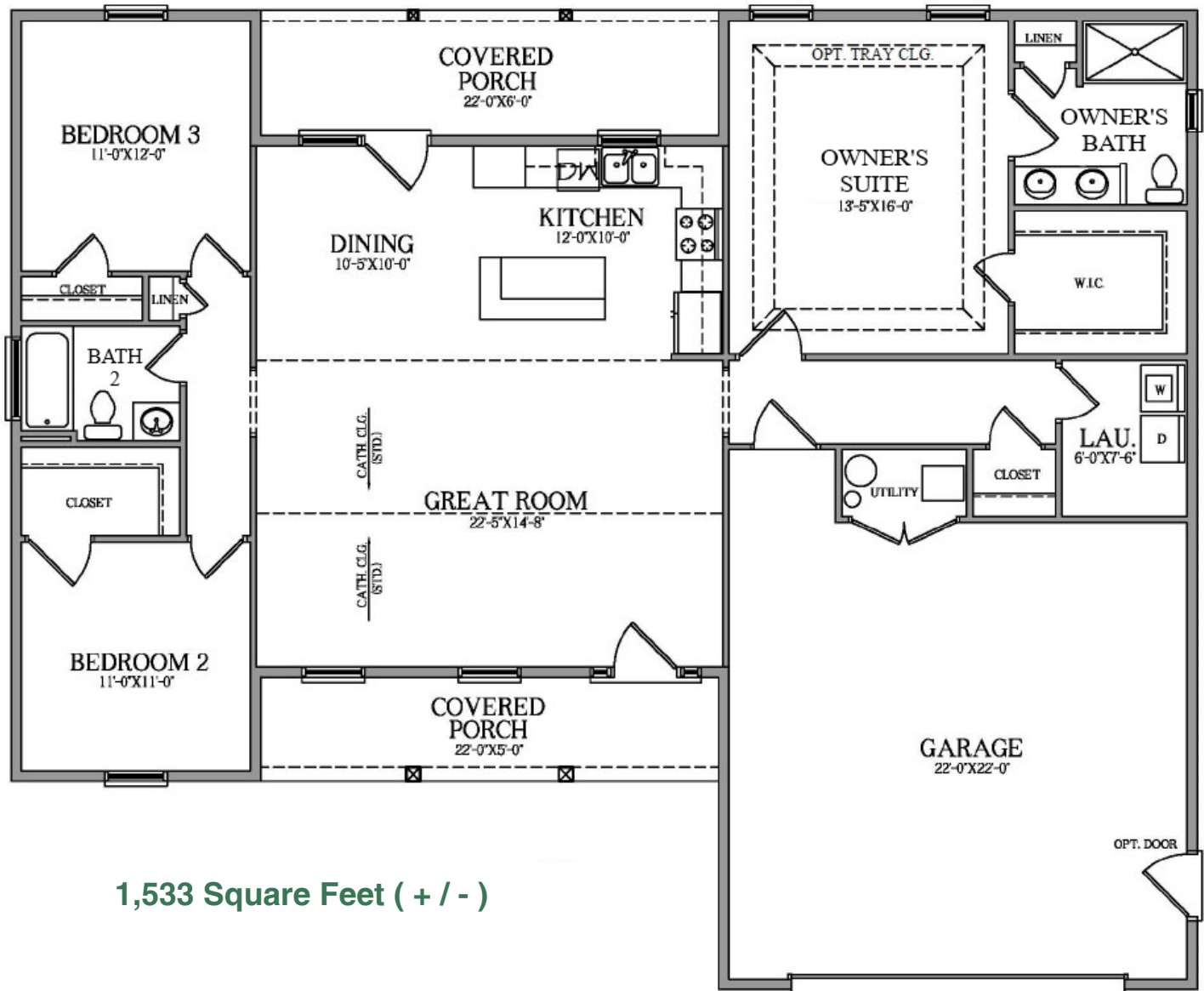
Contact Our Sales Office:
(304) 274-1288
info@panhandlehomeswv.com



*Bridle
Creek*

The Carson

ALSO AVAILABLE: UNFINISHED BASEMENT
AND FINISHED BASEMENT SPACE. SEE
SALES REPRESENTATIVE FOR MORE
INFORMATION.



1,533 Square Feet (+ / -)

Room sizes are approximate. Picture on front
may depict options not included in base price.
In a continuing effort to improve our homes,
the Builder reserves the right to make changes
in plans, features, prices, specifications and /
or materials without notice or obligation.

