

THE VILLAS

at Warm
Springs

The Waverly

Premiere 55+ Community
by Panhandle Homes of Berkeley County



Ranging from:

1,443 Sq. Ft. to 2,047 Sq. Ft.

- 2 or 3 Bedroom / 2 or 3 Bathrooms
- Optional 604 Sq. Ft Bonus Room to add additional space
- 2-Car Garage with Opener & Exterior Keypad

Contact our Sales Office:

304.274.2400 / 304.274.1288

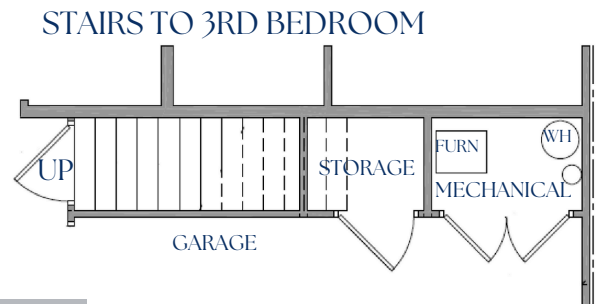
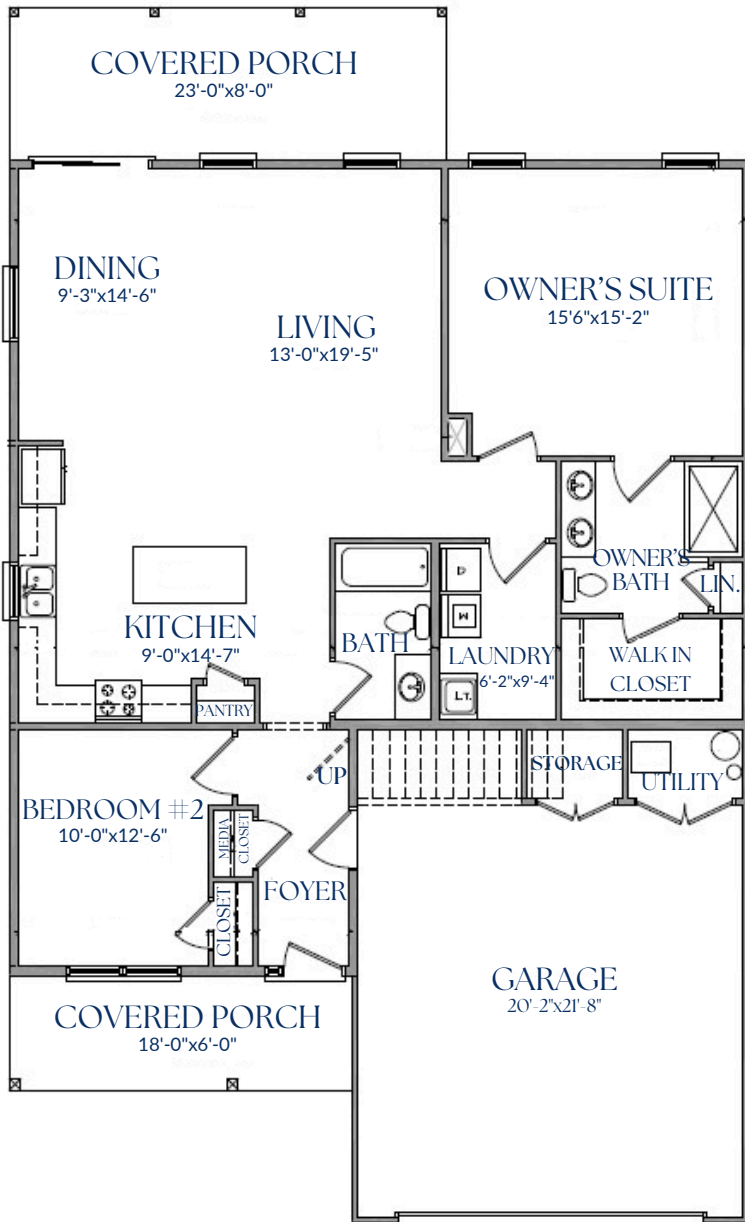
info@panhandlehomeswv.com

www.panhandlehomeswv.com

This Villa floorplan is the perfect choice for low maintenance! Designed with efficiency in mind, The Waverly has 36" doors throughout, a zero-barrier shower in the Owner's Suite and a dedicated laundry room. The Waverly Villa also comes with front and rear covered porches standard.



The Waverly



1,443 or 2,047 Sq. Ft (+/-)



Room sizes are approximate. Picture on front may depict options not included in base price. In a continuing effort to improve our homes, the builder reserves the right to make changes in plans, features, prices, specifications and/or materials without notice or obligation.

12/2023