

*Bridle
Creek*

The Grace



Elevation 3 Shown with Optional Stone

1,844 Square Feet
3 Bedrooms / 2 Baths
2 Car Garage

The Grace is our most popular design. It has covered front and rear porches, an oversized garage, flexible use spaces, split bedrooms, alternate owner's bath layouts, separate laundry room, and an outstanding kitchen with a seven foot island. You really can have it all!

Contact Our Sales Office:
(304) 274-2400
Info@panhandlehomeswv.com

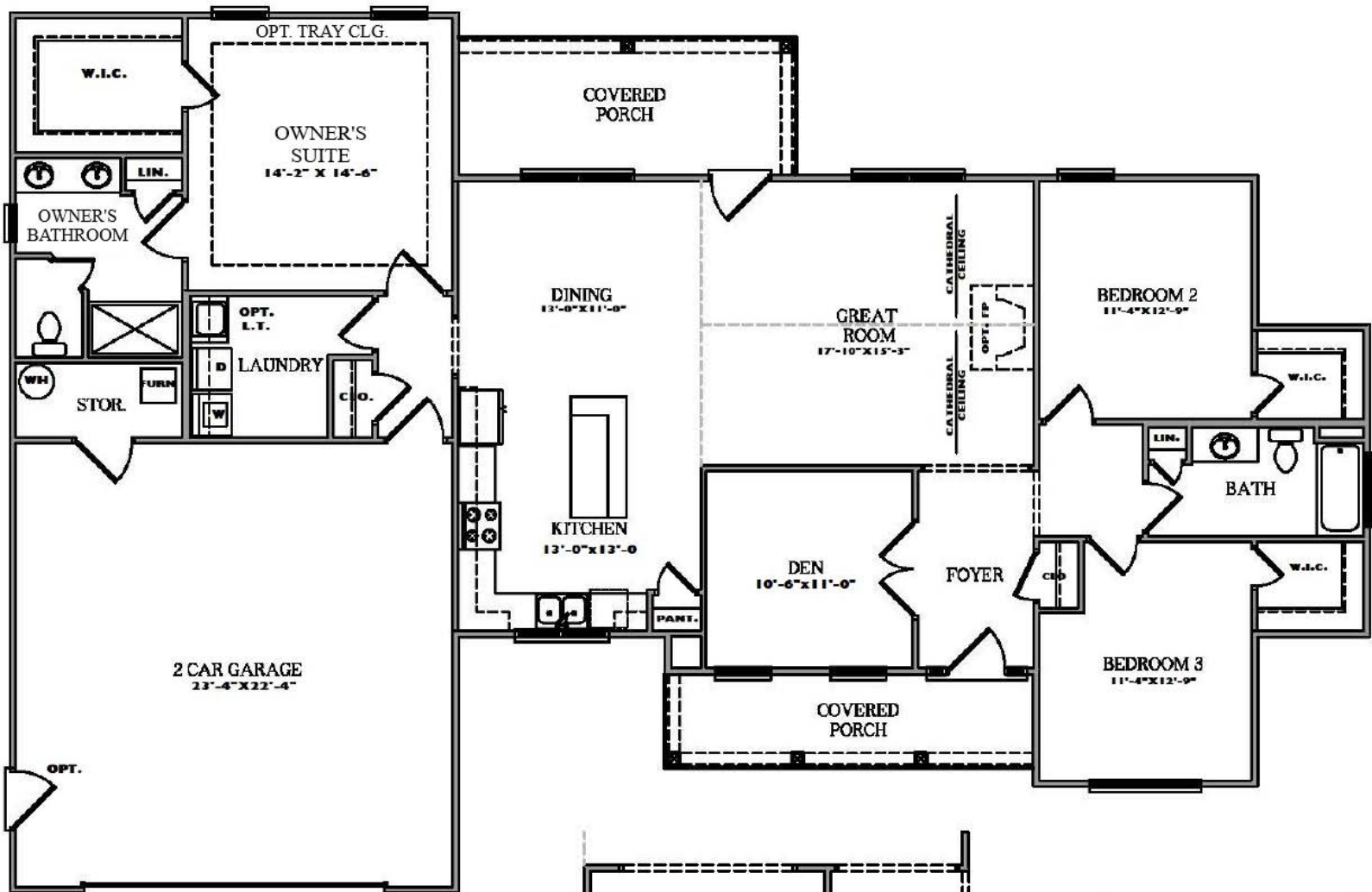
**PANHANDLE
HOMES**
OF BERKELEY COUNTY
www.panhandlehomeswv.com



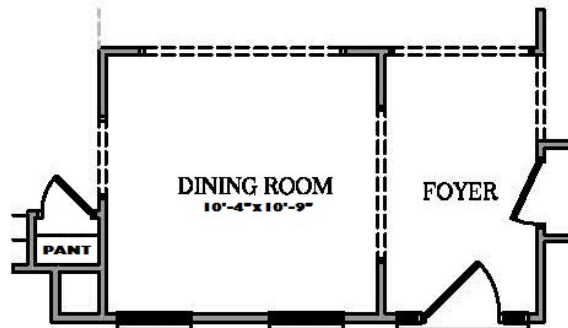


The Grace

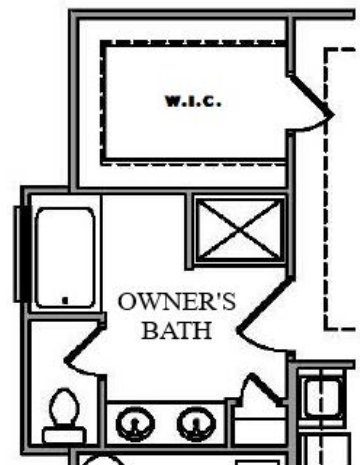
ALSO AVAILABLE: UNFINISHED BASEMENTS &
FINISHED BASEMENT SPACE. SEE SALES
REPRESENTATIVE FOR MORE INFORMATION.



1,844 Square Feet (+ / -)



OPT. DINING ROOM



OPT. DELUXE BATH

Room sizes are approximate. Picture on front may depict options not included in base price. In a continuing effort to improve our homes, the Builder reserves the right to make changes in plans, features, prices, specifications and / or materials without notice or obligation.

