

*Bridle
Creek*

The Levi



1,301 Square Feet
3 Bedrooms / 2 Baths
2 Car Garage

The Levi is our most efficient floor plan to date. It utilizes the 1,300 sq. ft. of finished space leaving the homeowner with great space to enjoy. It touts two covered porches, a two car garage, island kitchen with pantry, and cathedral ceilings in the great room. Enjoy coming home to the Levi.

Contact Our Sales Office:
(304) 274-1288
info@panhandlehomeswv.com

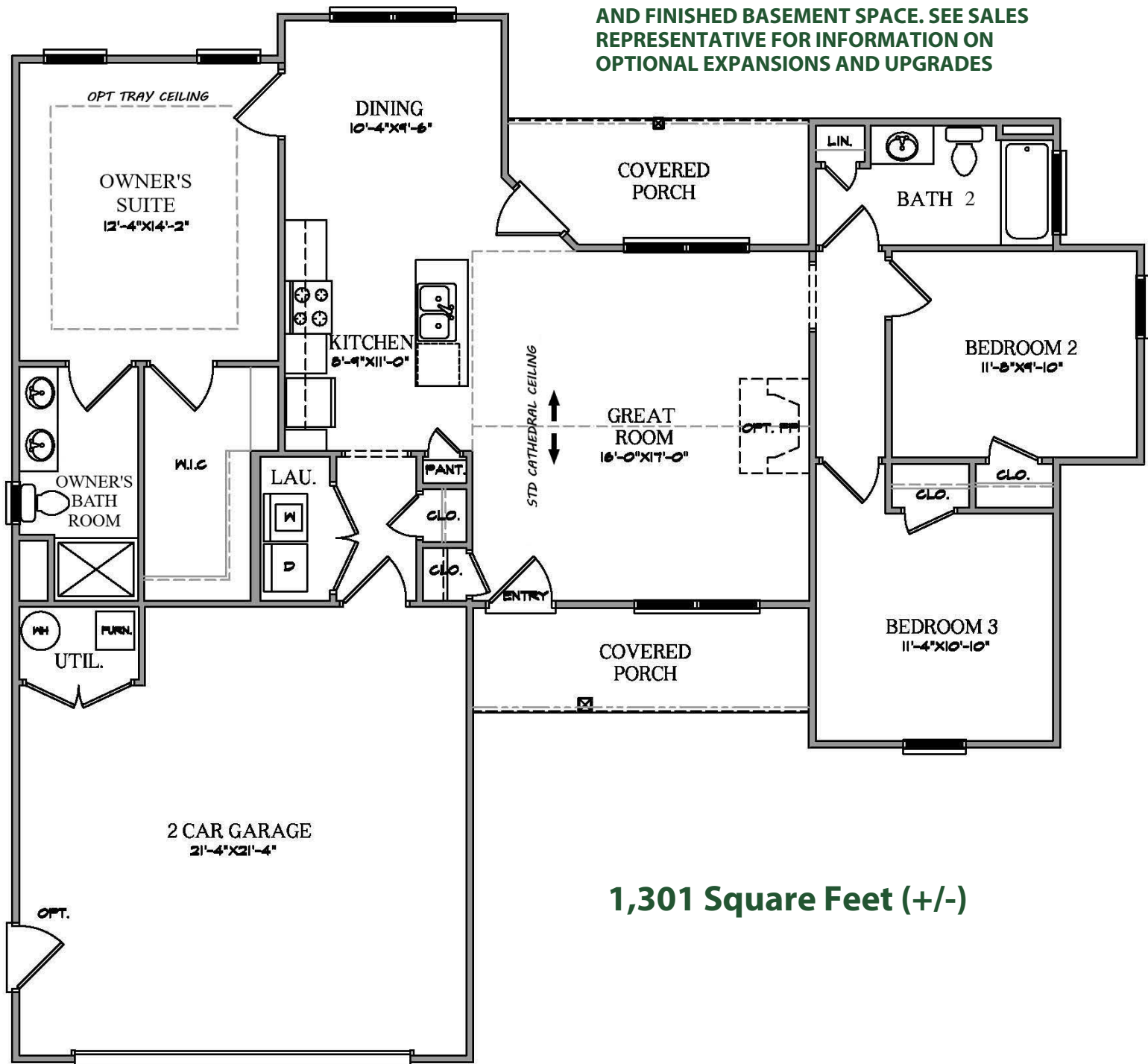
**PANHANDLE
HOMES**
OF BERKELEY COUNTY
www.panhandlehomeswv.com



The Levi



ALSO AVAILABLE: UNFINISHED BASEMENTS
AND FINISHED BASEMENT SPACE. SEE SALES
REPRESENTATIVE FOR INFORMATION ON
OPTIONAL EXPANSIONS AND UPGRADES



1,301 Square Feet (+/-)

Room sizes are approximate. Picture on front may depict options not included in base price. In a continuing effort to improve our homes, the Builder reserves the right to make changes in plans, features, prices, specifications and / or materials without notice or obligation.

